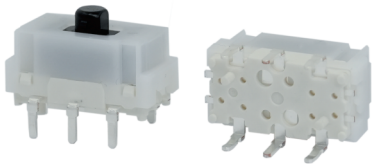


SS6 型拨动开关 Toggle switch series

◆ 特點和用途 Characteristics and usage

- 外形体积小, 产品性能可靠  
Small size and reliable product performance.
- 产品主要用于汽车座椅及门窗自动调节开关  
The product is mainly used for automatic adjustment switches of car seats and doors and windows



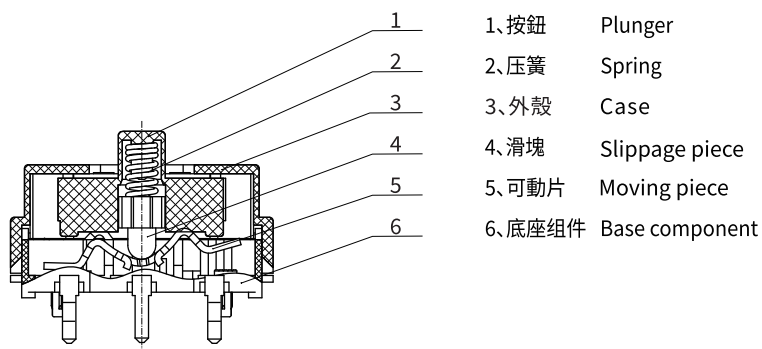
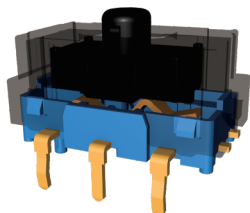
◆ 技術特性 Technical Characteristics

項目 Item		特性值 Value
環境溫度 Environment temperature		-40~+85℃
額定值 Ratings		12VDC,10(4)A;12VDC,10mA
动作力 Operating force		5.39±1.96N
移动量 Moving amount		2.5±0.3mm
絕緣電阻 Insulation resistance		≥50MΩ (500VDC)
接觸電阻 Contact resistance		≤200mΩ(初始值initial value)
工頻耐電壓 Test voltage	不相接端子間 Between non connected terminals	AC500V,50/60Hz, 1min
	端子與不帶電金屬件之間 端子與地(外殼)之間 Between each terminal and other exposed metal parts Between each terminal and ground	AC500V,50/60Hz, 1min
抗振動Vibration resistance		10~55Hz, 1.5mm两倍振幅double amplitude
电气寿命 Electrical Life		≥40,000次; ≥40,000 cycles
工作频率Operating Frequency		6次/min electrical 6cycles/min
質量 Weight		约3.8g Approx.3.8g

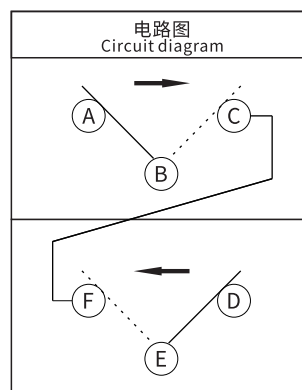
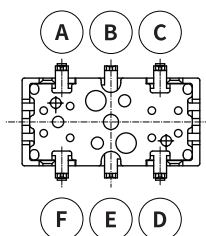
◆ 型號規格命名及含義 Model number legend and meanings

SS6-□  
└─ 规格代号, 用阿拉伯数字表示  
Specification code, represented by Arabic numerals

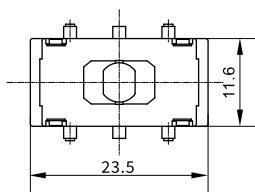
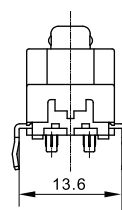
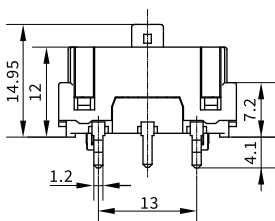
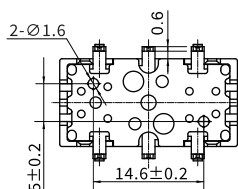
◆ 内部构造图 Internal configuration drawing



■ 接触形式说明图 Circuit illustration



◆ 外形尺寸和安装尺寸 Overall dimensions and mounting dimensions



To provide a safe and reliable on-off service let electric appliances more perfect