

BS1

BS1 型条形开关 Bar switch

◆ 特點和用途 Characteristics and usage

- 外形体积小巧, 产品性能可靠
Small size, reliable performance
- 产品主要用于汽车引擎盖及门窗控制开关
Mainly used for car hood, door and window control switch.
- 采用压接标准连接用端子, 方便接线及更换, 更加环保
Using crimping standard contact terminals, easy connection and replacement, more environmentally friendly.



◆ 技術特性 Technical Characteristics

項目 Item		特性值 Value
環境溫度 Environment temperature		40T85
額定值 Rating		30VDC,0.1A
动作力 Operating force		7.5±1.5N
全行程力 Total travel force		20N (MAX)
絕緣電阻 Insulation resistance		≥50MΩ (500VDC)
接觸電阻 Contact resistance		≤500mΩ
工頻耐電壓 Test voltage	不相接端子間 Between non-continuous terminals	AC300V,50/60Hz, 1min
	端子與不帶電金屬件之間 端子與地(外殼)之間 Between each terminal and non-current-carrying metal parts Between each terminal and ground(case)	AC300V,50/60Hz, 1min
抗振動 Vibration resistance		10~55Hz, 1.5mm两倍振幅double amplitude
抗衝擊 Shock resistance		衝擊值Shock value:980m/s ² 方向·時間:X、Y、Z方向 各5次 Direction and time: 5 times each in X, Y, and Z directions
电气壽命 Electrical Life		≥50,000次 ≥50,000cycles
質量 Weight		約10.8g Approx.10.8g
防護等級 Protection degree		IP67

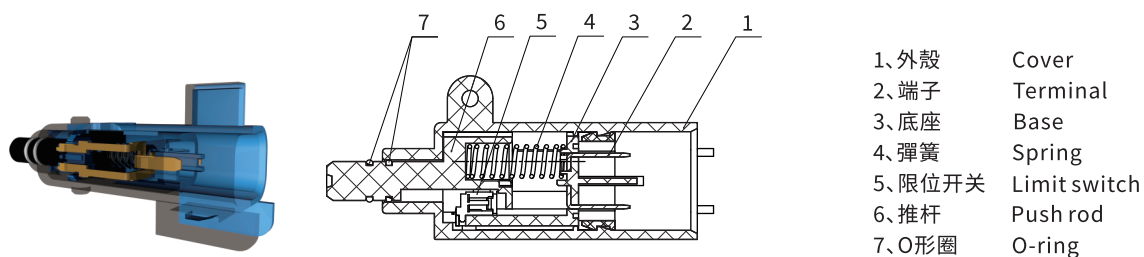
◆ 型號規格命名及含義 Model number legend and meanings

BS1 - □ (□)
 1 2

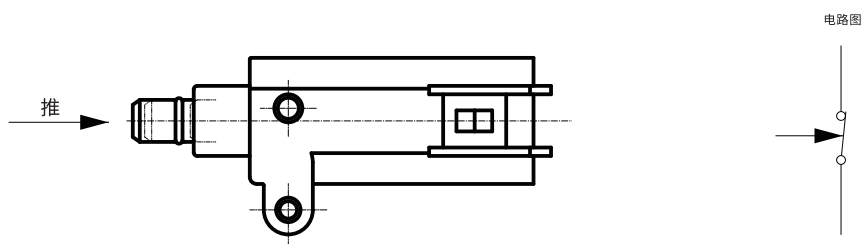
1 规格号 specs	用数字1、2.....表示 Shows as 01、02、.....
2 附加规格代号 Additional specs code	附加规格代号用两位阿拉伯数字表示, 如01、02、03.....用以表示有特殊要求。 Additional specs number shows as 01, 02, 03..... used to express special requirements.

其他開關系列
OTHER SWITCH SERIES

◆ 內部構造圖 Internal configuration drawing



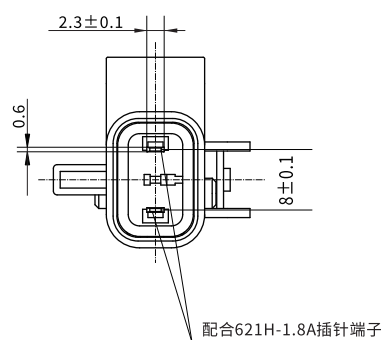
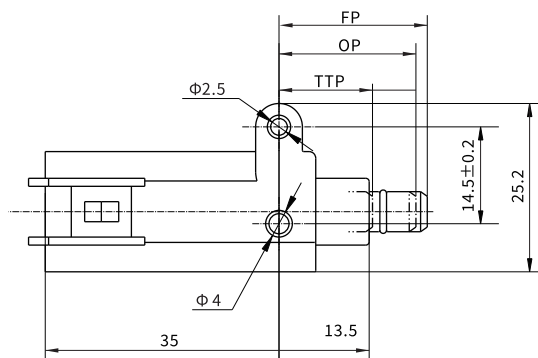
◆ 接觸形式說明圖 Circuit illustration



◆ 外形尺寸和動作特性 Dimensions and operating characteristics

BS1-1

型号 Model	BS1-1
OF (N)	7.5±1.5
TF Max(N)	20.0
FP (mm)	22.2±0.2
TTP Max(mm)	14.0
OP (mm)	20.5±0.6



To provide a safe and reliable on-off service let electric appliances more perfect