

## PS12型按钮开关系列 Button switch series

### ◆ 特点和用途 Characteristics and usage

- 寿命长、可靠性高;广泛应用于家用电器、冰箱和照明等。  
Long Life, high reliability, contact stability and reliability; widely used in household appliances, refrigerators, lighting and etc.
- 点接触稳定可靠  
Stable and reliable contact.

### ◆ 技术特性 Technical Characteristics

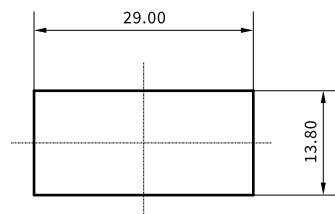
項目 Item		特性值 Value
環境溫度 Environment temperature		-40°C~+85°C
工作速度 Operating speed		30mm/s~600m/s
工作頻率 Operating Frequency		機械 60次/min; 電氣 15次/min Mechanical 60 cycles/min; electrical 15 cycles/min
絕緣電阻 Insulation resistance		≥100MΩ (500VDC)
接觸電阻 Contact resistance		≤100mΩ
工頻耐電壓 Test voltage	不相接端子間 Between non connected terminals	AC500V,50/60Hz, 1min
	端子與不帶電金屬件之間 端子與地(外殼)之間 Between each terminal and other exposed metal parts Between each terminal and ground	AC1500V,50/60Hz, 1min
抗振動 Vibration resistance		10~55Hz, 1.5mm 雙振幅 double amplitude
抗衝擊 Shock resistance		耐久 Endurance: 1000m/s <sup>2</sup> (約100G approx.100G)max 誤動作 Wrong action: 300m/s <sup>2</sup> (約30G approx.30G)max
壽命 Life		電氣 ≥150,000/300,000次 Electrical ≥150,000/300,000 cycles 機械 ≥500,000次 Mechanical ≥500,000cycles
防護等級 Protection degree		IEC IP40

### ◆ 型號規格命名及含義 Model number legend and meanings

PS12 □□-□□□- (□)  
1 2 3 4 5 6

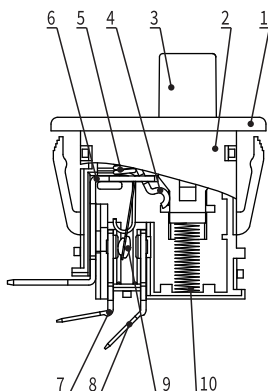
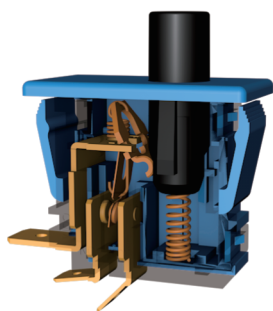
<b>1</b> 額定值 Ratings	A:16A 125/250 VAC B:10A 125/250VAC 1/3 HP 125/250VAC 5E4 40T85 C:10(4)A 250VAC 5E4 D:0.1A 125/250VAC E:4A 24VDC F:5mA 5VDC
<b>2</b> 接觸形式 Circuit	Z:轉換式SPDT D:常閉SPST-NC T:常開 SPST-NO
<b>3</b> 端子類型 Terminal types	A:250快接端子 Quick-connect terminal 250 B:187快接端子(厚0.8) Quick-connect terminal 187(0.8 thick) C:187快接端子(厚0.5) Quick-connect terminal 187(0.5 thick) D:250快接端子, 弯形 Quick-connect terminal 250, bend shape E:187快接端子(厚0.8), 弯形 Quick-connect terminal 187(0.8 thick), bend shape F:187快接端子(厚0.5), 弯形 Quick-connect terminal 187(0.5 thick), bend shape 注: 端子代号以COM支架端子为命名基准, 当NC、NO端子与支架不同时, 用附加代号表示。 Note: The terminal code is based on the COM support terminal. When the NC and NO terminals are different from the support, they are indicated by additional codes.
<b>4</b> 動作力 (max) Operating force	10:10N max 07:7N max 05:5N max
<b>5</b> 按鈕类型 Plunger type	A:Φ8.6 B:
<b>6</b> 附加規格型號 Additional specs code	附加規格代号用两位阿拉伯数字表示, 如01、02、03.....用以表示有特殊要求。 Additional spec number shows as 01, 02, 03.....used to express special requirements.

### ◆ 安裝孔尺寸 Mounting hole dimensions



# PS12

◆ 內部構造圖 Internal configuration drawing

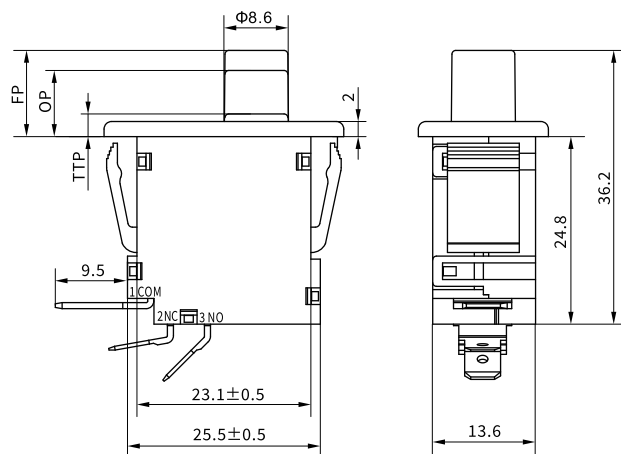


- 1. 基座 Base
- 2. 盖 Cover
- 3. 按钮 Plunger
- 4. 杠杆 Lever
- 5. 拉簧 Spring
- 6. 支架 COM terminal
- 7. 常闭接触件 NC terminal
- 8. 常开接触件 NO terminal
- 9. 动接触件 Moving piece
- 10. 压簧 Spring

■ 接觸形式說明圖 Circuit illustration

转换式 SPDT	常闭式 SPST-NC	常开式 SPST-NO

◆ 外形尺寸和動作特性 Dimensions and operating characteristics



参数 Parameters	
FP Max(N)	11.4±0.7
OP (mm)	8.9±1.2
OF Max(mm)	7
TTP Max (mm)	3.18